



# Gulf Coast Protection District

June 15, 2023

Texas Water Conservation Association

Nicole Sunstrum – Executive Director

# GCPD Purpose

- District created by the Texas Legislature in 2021 - Senate Bill 1160 87 (R)
- Special Purpose District
- Purpose – for the portions of the Coastal Texas and Sabine to Galveston programs located within GCPD territory:
  1. To serve as the non-federal sponsor in partnership with the USACE
  2. To provide the required non-federal cost share
  3. To operate and maintain the facilities once constructed.



# Legislative / Appropriations History

- 2019, SB 500: \$200M
- 2021, SB 1: \$200M
- 2023, HB 1: \$550M


# District Territory / Projects

~5,500 square miles  
~5.5 million people



Our Mission: To protect Texas Gulf Coast communities, the environment, and economic activity from storm surge

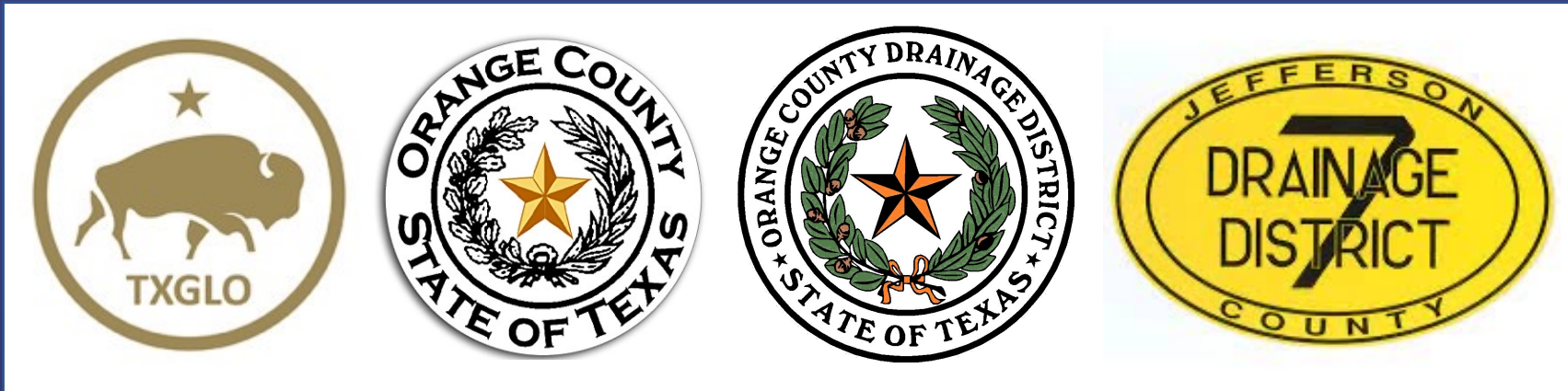


-  S2G Program - Orange County Project
-  S2G Program - Port Arthur Project
-  Coastal Texas Program



# Non-Federal Agreements

- Texas General Land Office
- Orange County
- Orange County Drainage District
- Jefferson County Drainage District. No 7



# Coastal Texas Program

**THE VALUABLE  
TEXAS COAST**  
*BY THE NUMBERS...*

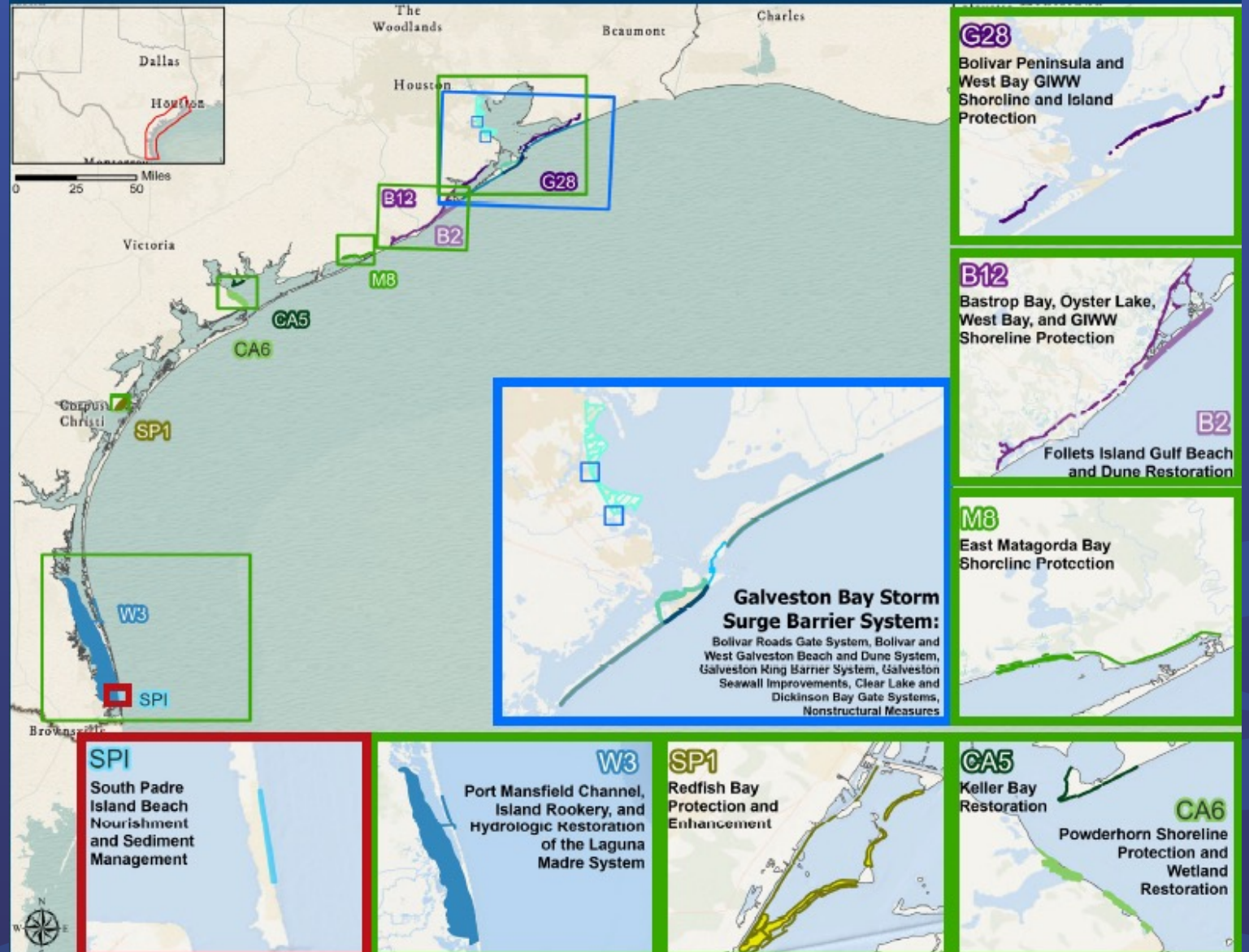
**6+** MILLION  
RESIDENTS

**3,300**  
MILES OF COASTLINE

**24%**  
OF STATE'S  
POPULATION

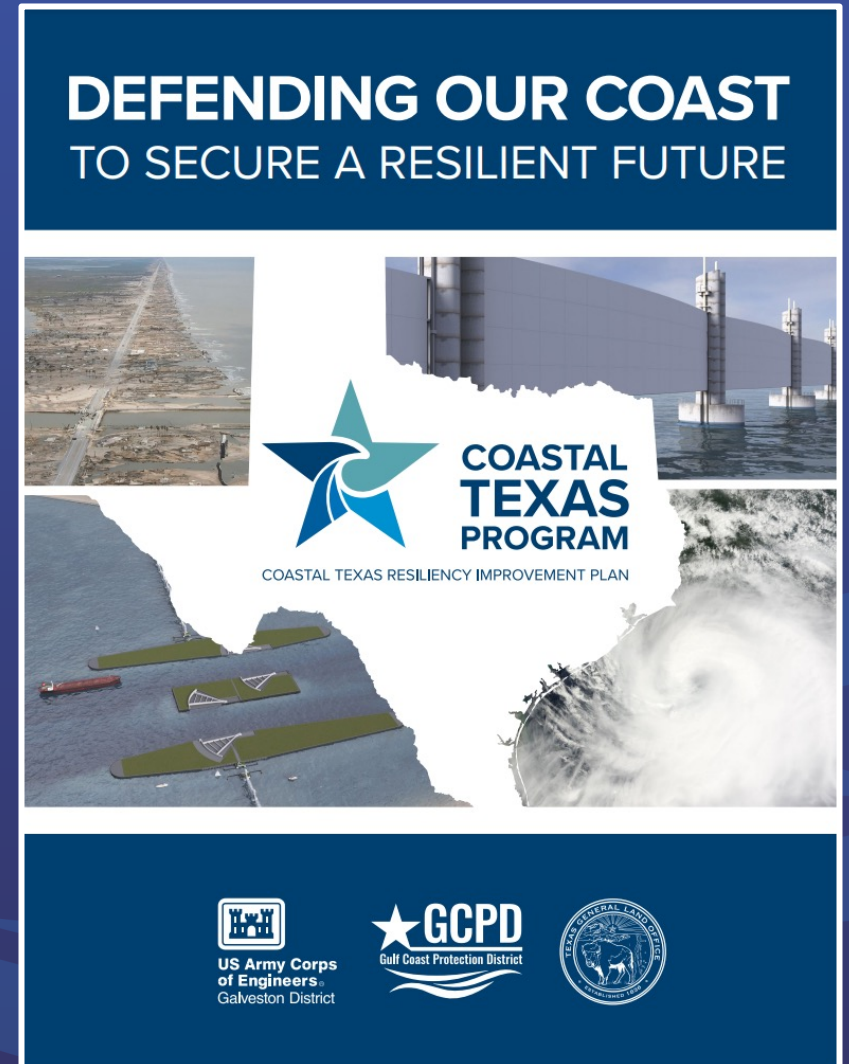
**15.8%**  
OF U.S. PORT  
CARGO HANDLED

**30%** OF U.S. REFINING  
CAPACITY



# Coastal Texas Program Status

- December 2022 - NDAA/WRDA 2022
  - Authorized Coastal Texas Program for construction
- USACE and GCPD pursuing initial Federal appropriations to jump-start the program
- USACE and GCPD negotiating agreements for upcoming phases of design and construction
- USACE and GCPD hiring



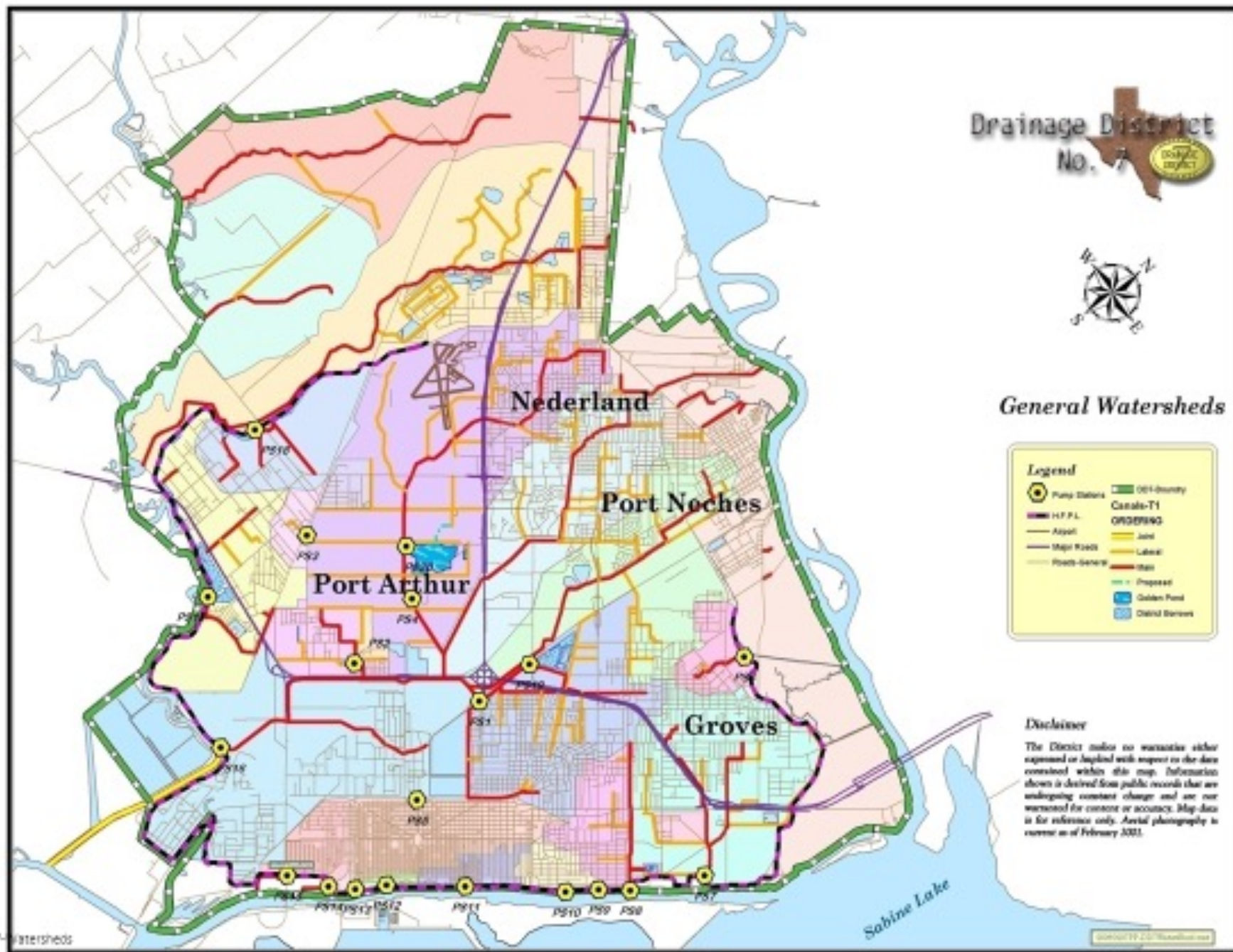
# Jefferson County Drainage District No. 7



*"Drainage • Storm Water Management"*





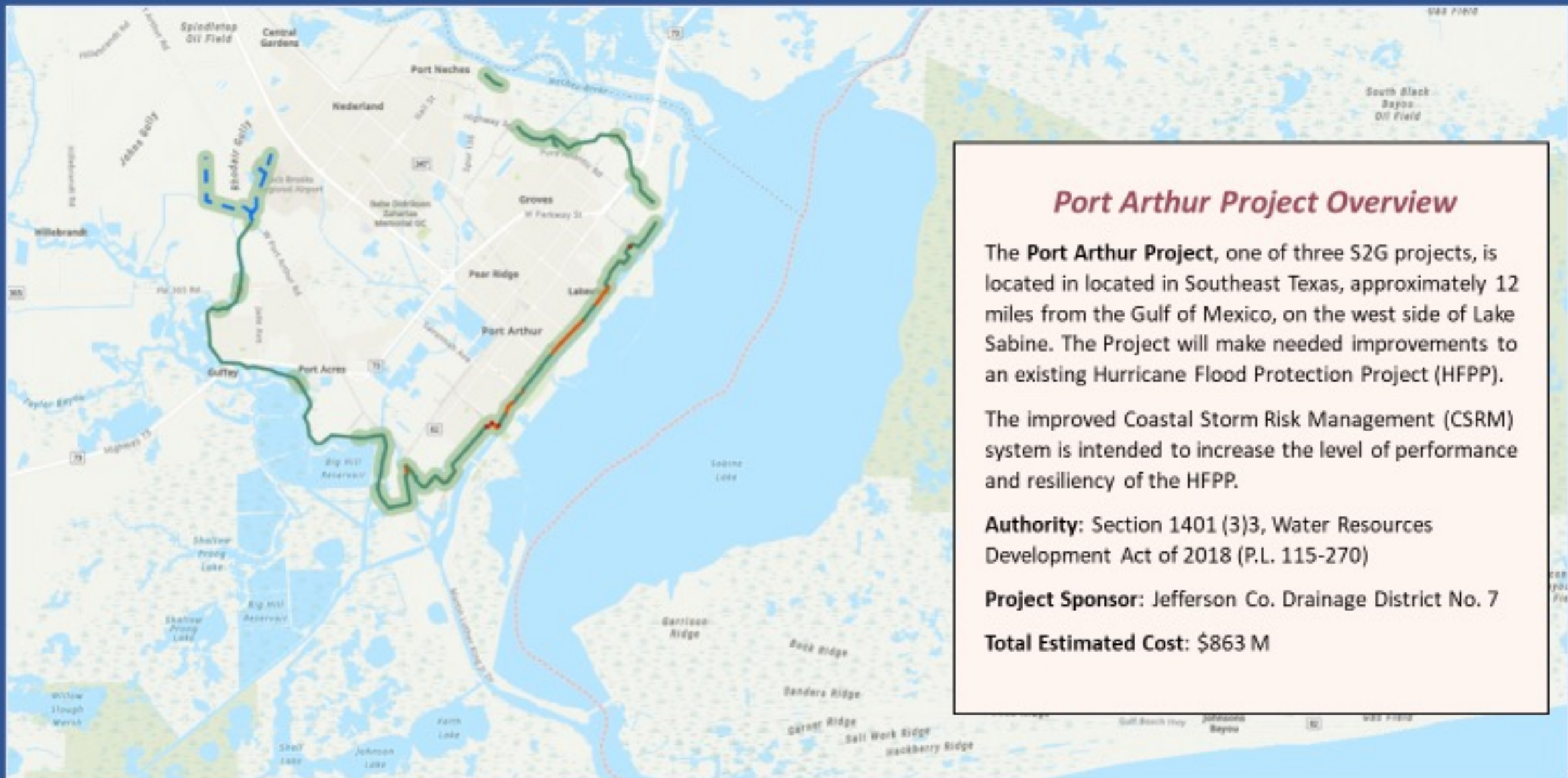


## Jefferson County DD7

- Established in 1946
- Provides drainage and hurricane protection for 107.5 sq. miles of south Jefferson County
- Initial HFPP authorized in 1962 and completed in early 1980s
- Current System consists of:
  - 281 miles concrete & earthen ditches
  - 28 miles of earthen levee
  - 6 miles of concrete or steel seawall
  - 20 pump stations
  - 25 gate closures
  - 29 culvert closures



# Port Arthur Project Overview



## *Port Arthur Project Overview*

The **Port Arthur Project**, one of three S2G projects, is located in Southeast Texas, approximately 12 miles from the Gulf of Mexico, on the west side of Lake Sabine. The Project will make needed improvements to an existing Hurricane Flood Protection Project (HFPP).

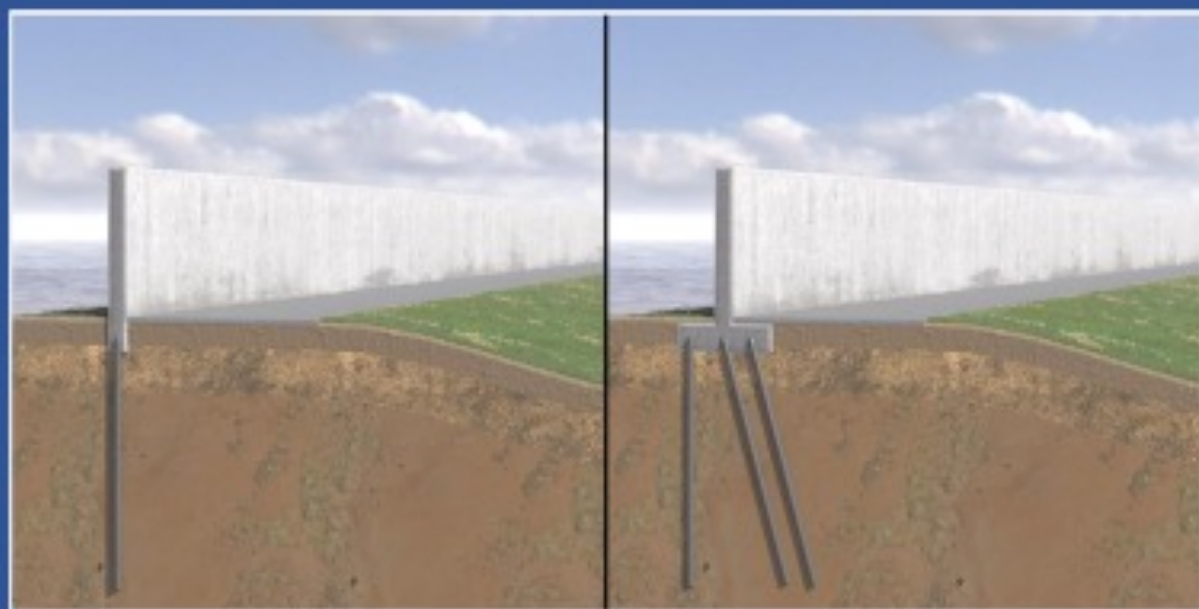
The improved Coastal Storm Risk Management (CSRM) system is intended to increase the level of performance and resiliency of the HFPP.

**Authority:** Section 1401 (3)3, Water Resources Development Act of 2018 (P.L. 115-270)

**Project Sponsor:** Jefferson Co. Drainage District No. 7

**Total Estimated Cost:** \$863 M

# Project Features

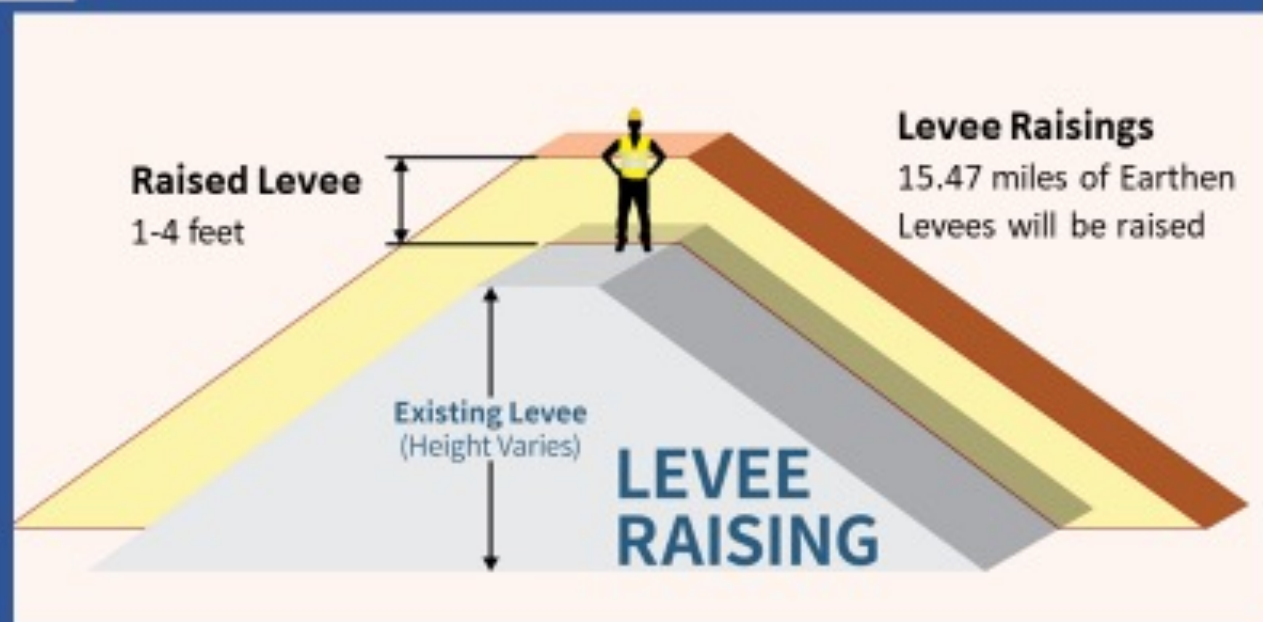


## Project Features

The project includes the following features:

### Floodwalls (Replace Existing I-Walls with T-Walls)

- Construct 4.81 Miles of New Concrete Floodwall
- Provide Levee Erosion Protection (Stone Armoring)



# Project Schedule/Timeline

## Project Schedule

- 2017  
Feasibility study complete
- 2018  
Study authorized and funded by Congress
- 2019  
First contract awarded
- 2020  
Construction begins
- 2025  
Final design complete
- 2029  
Project complete

## Port Arthur Project Timeline





**US Army Corps  
of Engineers** ®  
Galveston District



Gulf Coast Protection District



# Orange County Coastal Storm Risk Management Project



Orange  
County

# Orange County

Neches River

Sabine River

Sabine Lake















# Levees and Floodwalls Current Project Alignment





Cow Bayou

Adams Bayou

Orangefield

Poinciana

West Orange

Orange

Bridge City

Sahm Creek